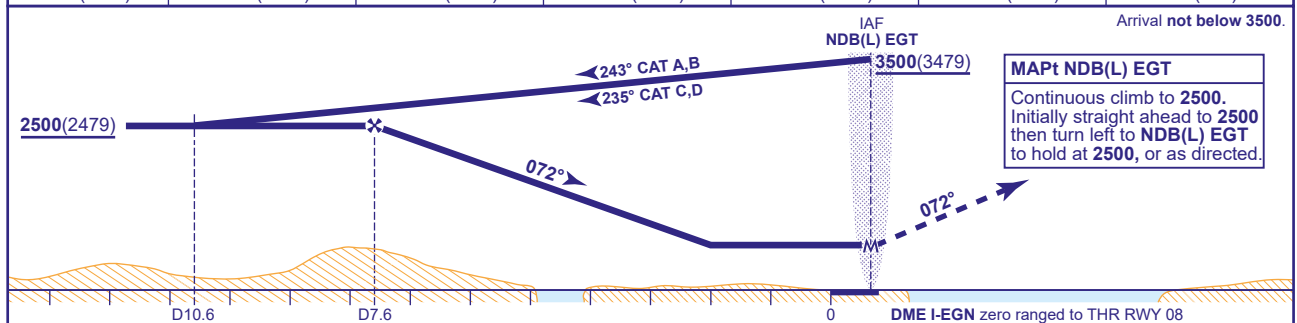


RECOMMENDED PROFILE Gradient 5.24%, 315FT/NM

DME I-EGN	7	6	5	4	3	2
ALT(HGT)	2310(2289)	1990(1969)	1670(1649)	1350(1329)	1040(1019)	720(699)

Arrival not below 3500.



Aircraft Category		A	B	C	D	Rate of descent	G/S KT	160	140	120	100	80
OCA (OCH)	Procedure	1210(1189)	1210(1189)	1210(1189)	1210(1189)		FT/MIN	850	750	640	530	420
VM(C)OCA (OCH AAL)	Total Area	950(927)	950(927)	1740(1717)	1740(1717)							
	North of RWY 08/26	430(407)	580(557)	720(697)	1090(1067)							

NOTES	1	Lowest altitude to commence procedure from hold is 2500 .
	2	FAT offset 2.7° from RWY CL.
	3	DME not usable below 3500 between 140° and 185° due to terrain effects.
	4	Aircraft are permitted to enter the Eglinton CTA areas whilst using these procedures and under the control of Eglinton ATC.

CHANGE (2/26): APP FREQUENCY. MAG VAR. MAG TRACKS.